



C·A·S·L·E

Commonwealth Association of Surveying & Land Economy (CASLE)

SEPTEMBER 2020

It is hard to believe that it is over 6 months since the start of the 'Lockdown' here in UK. Working from home has become the norm for many people and it may prove difficult to encourage them back into the routine of travelling to work in offices. Many of the large firms in cities have given their employees the choice of whether to work from home in future or to travel in to the office by arrangement, which has resulted in many offices being empty for much of the time. This raises the question of whether some of the large offices in London and other major cities will have surplus space in the future. If so, how will this be managed?

The Government here in UK is committed to providing thousands of new homes over the next few years and it may be possible to change the use of some redundant offices to flats and apartments.

This Pandemic has not only affected peoples' health but it has also changed the way many people live their day to day lives, how they travel and how they shop. A report on a recent news programme here in UK, suggested that people will tend to walk and cycle much more in the future and use local shops for their daily requirements, rather than large shopping Malls. The reduction of shopping in large city centres, in favour of, perhaps, a revival of more dispersed shopping areas, may very well reduce the demand for city centre shops and could reduce property values. That suggests that there could eventually be a lot of work for those people employed in many of the built environment professions.

Most of us are becoming accustomed to online meetings, using Zoom, Microsoft Teams etc and it seems unlikely that we shall go back to regular physical meetings, even if a suitable vaccine is found, or the Virus is eradicated. Online meetings save time, unnecessary travel and expenses but they do not provide the camaraderie and the opportunity to socialise, that we have come to expect from physical meetings.

During the Lockdown, members of the CASLE Management Board & Task Force have been giving some serious thought to the next General Assembly, which we hope will take place in 2021. Due to the Pandemic I agreed to delay my retirement so that we could keep the administration functioning, even though we are unable to access the CASLE office at University of the West of England at the moment. We recently received a very welcome proposal from the Royal Institution of Surveyors Malaysia (RISM) to take over some of the administration of CASLE and the discussions are ongoing. Around the same time it was announced that Professor Paul Olomolaiye, former Executive Dean of the Faculty of Architecture and the Built Environment, had just been appointed Pro Vice Chancellor for Equality and Civic Engagement as a member of the University Directorate at UWE. Professor Olomolaiye has been a tremendous support to CASLE and he is very keen for the CASLE office to remain in the Faculty of Architecture and the Built Environment at UWE under the same administrative arrangement.

We are in discussions at the moment with Dr Jim Mason, Dr Abdul-Majeed Mahamadu and other members of the CASLE Task Force on new ideas for the future, particularly in respect of research projects and online Masters' degrees which we hope will be accessible to many of our CASLE members. Please see further information on page 8.

It is my personal view that the future direction of CASLE will lie in the encouragement and coordination of research projects involving cooperation between various specialisms of the built environment and related fields.

Susan Spedding (Mrs)
Secretary General

NEW MEMBERS

Germain Dishimiyamana

NPD Ltd, Oxford, UK - Civil Engineering & Construction.

Germain has been a Surveyor for more than 20 years, and has dealt with surveying activities in parallel with civil engineering and construction. He has been involved in:

- Surveying data collection
- Data analysis
- Drawing, design in ACAD, CIVIL 3D, ArcGis, in different sections (Roads, power electrical lines Dams, Cadastre, Land titles, water supply systems, buildings, marshland, marine) and implementation of these data
- Renewable energy such as hydro-power, soleil energy, biogas and biomass
- Farm Irrigation pump systems
- Coordination or supervision

Dr John McNaughton & Mr Christopher McNaughton

Palmer Bruyn, Newcastle, N.S.W, Australia - Land Surveying, Engineering & Town Planning.

Mr Otto Martin

Omoto District local Council, Uganda - Cadastral surveys for registration purposes. Land use management.

WEBINARS

Sustainable Urbanisation

The following online meeting took place on Wednesday 24th June 2020.

'A call to action on sustainable urbanisation across the Commonwealth' and the launch of the pilot programme of lectures for built environment professionals, the aim being to facilitate knowledge exchange between member organisations and firms, to help promote mutual understanding and greater awareness of issues related to climate change and rapid urbanization, together with UN 2030 'Sustainable Development Goals'(SDGs)

Ms Dyan Currie, President of the Commonwealth Planners, welcomed everyone to the webinar, and introduced the speakers, HRH The Prince of Wales, Hon Claver Gatete, Minister of infrastructure, Rwanda, Rev Mpho Moruakgomo, President of the Commonwealth Government Forum, and Professor Mamokgethi Phakeng, University of Capetown.

Rwanda, the host country for the Commonwealth Heads of Government Meeting (CHOGM) which has been re-scheduled for 2021 in Kigali, is in a good position in respect of the needs & objectives of Sustainable Development, green growth approach, good planning, increased growth, and infrastructure development. The challenges are in providing the environment for job creation, social housing and sharing and developing good practice.

Rev Moruakgomo talked about the rapid urbanization and the need for economic and social development and global commitments re sustainable urbanization in respect of villages, towns and cities.

Following the webinar, the following message was received from representatives of Commonwealth Sustainable Cities *On behalf of the Association of Commonwealth Universities, the Commonwealth Association of Architects, the Commonwealth Association of Planners, the Commonwealth Local Government Forum and The Prince's Foundation, we are writing to thank you for attending our programme of events focused on a Call to Action on Sustainable Urbanisation in the Commonwealth that have been running from 24 June 2020 - 02 September 2020. Whether you attended one or all of the events, the programme would not have been the success that it was without your participation and engagement.*

It might be of interest that, throughout the 19 online events scheduled across 11 weeks, there were 106 panellists representing 31 countries and a variety of sectors and disciplines. The programme attracted over 2,000 participants from 44 Commonwealth and 44 non-Commonwealth countries: amounting to over 4,000 unique views.

The sessions covered a broad cross section of issues and discussions which were very wide-ranging. The key messages are grouped as follows:

1. Dealing with rapid urbanisation is a central issue for many Commonwealth countries
2. Effective planning is essential in preparing for and responding to rapid urbanisation
3. City led and empowered leadership with support for decentralisation is key
4. The COVID-19 pandemic has brought localisation to the fore
5. Aligning with the SDGs, and climate responses, is key for sustainable urbanisation
6. Sustainable urbanisation responses must be fully inclusive
7. Local economic development drives local sustainability
8. Infrastructure development must support community resilience
9. Sustainable urbanisation affects us all, large or small
10. The Commonwealth has a pivotal role to play

The intention was to build upon the momentum generated by the recent programme, and the following are among a range of activities to be taken forward together:

- **Commonwealth Summit:** Bring the issue of sustainable urbanisation to the attention of Member States and encourage them to place this firmly on the Commonwealth agenda
- **Call to Action:** Informed by the outcomes of the online programme, develop a Call to Action supported by our Commonwealth leaders and endorsed by the political leadership across the Commonwealth member states.
- **Advocacy Strategy:** Develop a strong advocacy strategy on the issues of sustainable urbanisation in the run up to the Commonwealth Heads of Government Meeting.
- **Building on existing work:** Continue with the extensive work we are already doing in support of sustainable urbanisation.
- **Capacity Development:** Develop the capacity of built environment professionals and other city stakeholders. Seek funding for comprehensive capacity building programmes.
- **Commonwealth Sustainable Cities Network (CSCN) as a vehicle:** Reinforce mechanisms to work collectively, across disciplines and sectors with a broadened technical, academic, and professional committee to ensure wide collaboration.
- **Commonwealth wide collaborative governance:** Seek support through the inter-governmental Commonwealth framework and urgently promote “collaborative governance”
- **A collaborative Commonwealth initiative:** Continue to develop the sustainable urbanisation initiative, in collaboration with the Commonwealth network.
- **Align future activity with the Commonwealth and global development agenda and events**

Recordings of all the events and further information on the Online Programme can be found on the following website: www.commonwealthsustainablecities.org/onlineprogramme or for the 7 CAA-led lecture series on the following website: www.commonwealthsustainablecities.org/cpd.

CASLE WEBINAR

The President of CASLE, Mr Joseph Olusegun Ajanlekoko gave the following address at the CASLE/UWE Webinar entitled “NEVER WASTE A GOOD CRISIS” - held on Thursday 9th July 2020 at 11:00 am

- (i) Members of CASLE Management Board
- (ii) Members of CASLE Task Force Team
- (iii) Member Bodies of CASLE here present
- (iv) Distinguished Ladies and Gentlemen

I welcome you warmly to this webinar – the first to be served to members since the commencement of the pandemic! In the first 6 months of this year 2020, we have all become living witnesses to the Covid-19 pandemic.

It took humanity unawares, bringing along confused hues and cries, turmoil and disorder. Nations upon nations have been at wits end, to find a solution. No corner of the earth seems to be spared of the plague of this corona virus. It has disrupted the way of life and lifestyle of human beings like no epidemic has ever done before.

Perhaps what makes the present pandemic worrisome is the global nature of its spread and effect. It has practically brought the world to a standstill. The global economy has been shut down, amidst confused reactions by the world powers and governments all of whom are trying to learn lessons from the events. The pandemic has foisted upon the whole world, Governments, Institutions, Professionals, Businesses, people, a rethink of how things are to continue. For we surveyors, what are the lessons to be learnt, and how are we to proceed in this present times.



Mr Joseph Ajanlekoko

Are there opportunities in adversity?

Are we able to ride this wave?

For your information the so called “Good old time will never come back again”

This webinar is to throw our eyes wide open as to where the profession is now? What and where is it likely to be this post Covid-19?

Are there lessons learnt?

‘Never waste a good crisis’ was attributable to Sir Winston Churchill. And we have adopted it as the theme for today’s webinar. In challenging times, one must question the accepted reality because as things are going wrong, rapid answers are needed! The famous saying “Necessity is the mother of invention” becomes very apt and relevant here.

The next step to ensuring survival will be to balance personal life styles and entrepreneurial business models with the sustainability of the planet. The consumption of resources must no longer exceed the capacity of ecological systems to absorb the harmful effects of human activities.

The post Covid-19 has shown that the ethical principle of protecting human life was given priority. Ethical principles would have to be applied to guarantee the survival of the planet and all ecological habitats – a new economy is going to emerge – bio economy or circular economy which involves the use of biotechnology in the production of goods, services and energy from biological material at the primary resource base. The built environment must quickly adjust to this new reality of sustainability.

The work related covid-19 changes are here to stay.

Generally, there is now a shift in the changes in the working context, such as more flexibility with respect to home office, working hours and part time work. Less bureaucratic procedures for sickness leave and less business trips and outside appointments. Women are particularly more disposed towards the new work style.

POST COVID-19 – ROAD MAP TO RECOVERY – UNPRECEDENTED SOLUTIONS

- Maximize employment and retain only key figures

- Boost productivity to secure improved value – (capacity building)

- Transform the industry through technology and digitalization. These are in 3 phases (The 3 Rs) viz:

Phase 1: ‘Restart’ – Focuses on getting construction workers back to work safely (Health and Safety)

Phase 2: ‘Reset’ – Increasing workload across infrastructure, and housing markets – (A shift in design) because of social distancing

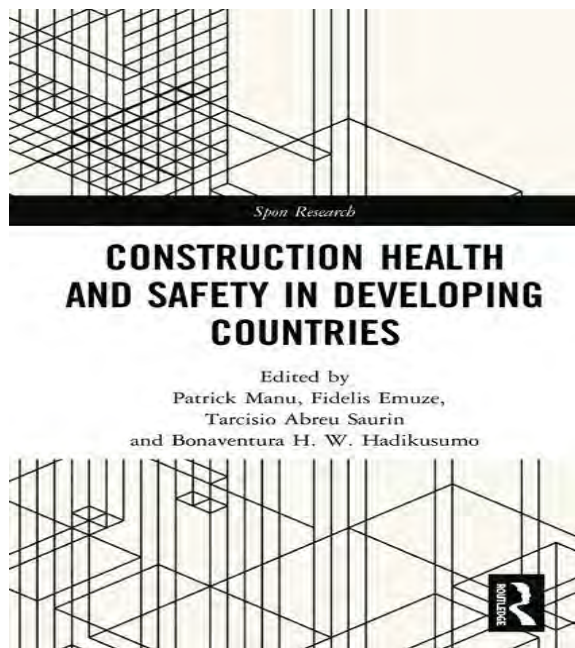
Phase 3: ‘Reinvent’ – focuses on transforming the industry to adopt digital work flows, delivering low carbon sustainable projects and value projects on a whole life cycle. With the Covid-19 outbreak and the stay at home law by the government, these are trying times for businesses. Thankfully, moving your business operations online and maximizing the digital space is still the best viable option at this trying time because more people will have plenty of idle time and will definitely spend that time surfing the internet. 7 ways of digitalizing your business this Covid-19 period are:

- 1 Deploy the power of WhatsApp for marketing
- 2 Turn your social media business page to a marketing tool
- 3 Own a website where you direct people to see your product/services
- 4 Use Email Marketing as a powerful option
- 5 Implement SEO on your site for crazy brand visibility
- 6 Deploy Facebook/Instagram Ad
- 7 Use Google ad to reach out to people

We shouldn't allow COVID-19 to shut down our lives and businesses. Let's make the best use of the situation. Once again, I welcome you to this webinar. In the final analysis we must adopt and align with the digital revolution which the times call for. Thank you.

Joseph Segun Ajanlekoko - President – CASLE

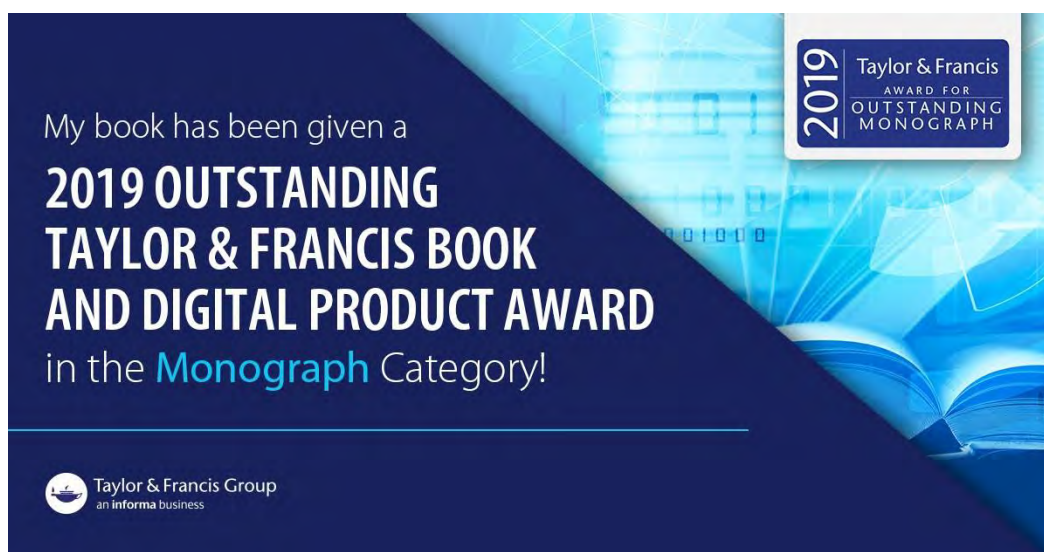
Outstanding Book Award for CASLE Task Force Member



Dr Patrick Manu, who is a member of the CASLE Task Force has been awarded the **Outstanding Book Award for “Construction health and safety in developing countries”**

While the global construction industry is notorious for a high prevalence of accidents and illnesses, the situation is worse in developing countries. However, the bulk of published construction health and safety literature has focused on issues in developed countries. To help address this gap, the first book collection to focus on construction health and safety issues in developing countries was published in 2019. The book, “Construction health and safety in developing countries”

(https://www.routledge.com/Construction-Health-and-Safety-in-Developing-Countries/Manu-Emuze-Abreu-saurinHadikusumo/p/book/9781138317079?utm_source=outlook&utm_medium=email&utm_campaign=B002477_ca1_1au_4cm_d279), which was edited by Dr Patrick Manu, a member of the CASLE Task Force, has been awarded the 2019 Taylor & Francis Outstanding Book and Digital Product Award (digitalproductawards?utm_source=outlook&utm_medium=email&utm_campaign=B002477_ca1_1au_4cm_d279) in the 2019 Outstanding Monograph in Engineering Category. The book covers occupational safety and health issues in construction in several countries in Asia, Africa, Europe and South America. It is particularly encouraging for a text on the built environment, particularly construction in developing countries to be given this award within the broad engineering discipline category.



Commonwealth Housing Trust

Clifford Dann had many achievements in his long life. One of his legacies is the charity he established, the Commonwealth Housing Trust (No, 110212) which is focused on providing financial and material assistance for housing projects, especially for marginalised communities, in Commonwealth countries. In Sri Lanka after the devastating tsunami CHT was able, with the support of local professionals, to construct nine houses. In Kenya CHT supported the building of a hostel so that vulnerable and disabled children were able to attend school and avoid long and dangerous journeys home. Now, also in Kenya, CHT is working alongside a Kenyan charity, Commonwealth Housing Group, to support a largely self-build scheme, known as MWAMKO, that will take a group of 25 families from the slums of Korogocho, Nairobi. The site identified by Clifford has been purchased, fenced and the initial services installed. The foundations of the first five houses have just been laid. If you would like to support this life-changing work that Clifford initiated do visit <https://www.commonwealthhousingtrust.org> to learn more about CHT's work and how to donate. All funds raised are passed to CHG in Kenya for building work which is overseen by volunteer local professionals. Max Crofts Trustee, CHT.



Mr Max Crofts

Many thanks to Max for his report on the activities of the Commonwealth Housing Trust. Some of our CASLE members may remember a report in CASLE Newsletter No.36 in respect of a visit to Sri Lanka, in June 2010, by Professor Dr Alan & Mrs Susan Spedding. During their time in Sri Lanka they went to visit one of the houses, sponsored by CHT which was being constructed near Bentota in Sri Lanka. It was quite a good-sized house for a family, set in a wooded area. They met the family who were very pleased with their new home and they prepared a report on progress for the Commonwealth Housing Trust.

NEWS FROM THE REGIONS

AFRICA REGION

The Real Estate Institute of Zimbabwe (REIZ) Webinar took place on Thursday 13th August. The theme was **'Embracing the new normal by adopting sustainable property portfolio management strategy'**. The Welcome address was given by Mr Alexander Millin, REIZ President.

The first speaker, Ms T Dzvukamanja, President of the Institute of Architects of Zimbabwe gave a presentation entitled **'Office and Retail Space of the future: an appropriate and sustainable adaptation to the new normal'**

This was followed by a Presentation on **'Skyscraper Property Management Software'** by Skyburg Systems and an **'Overview of the Public Procurement and Disposal of Public Assets (PPDPA) Act [Chapter 22:23]'** by Mr C. Gondo, Capacity Building Director- PRAZ.

Mr M.E. Juru, Chairperson of the Institute of Directors of Zimbabwe gave a presentation on **'Governance of Sustainability in Real Estate'**. Mr K Masiyenama, Legal Practitioner with Chikwangwani Tapi Attorneys gave a presentation on **'Legal consequences of covid-19 Regulations (Statutory Instruments) on Real Estate business in Zimbabwe'** This was followed by a Plenary Session and closing remarks from Mr B Kashoni, REIZ Vice President,

Mrs Susan Spedding, Secretary General of CASLE sent a message of support & Goodwill to members of The Real Estate institute of Zimbabwe from members of the CASLE Management Board & Task Force.

ASIA REGION

30th Pan Pacific Congress of Real Estate Appraisers, Valuers & Counsellor

We have been informed that the Congress scheduled to take place in Kuala Lumpur, Malaysia from Sunday 4th to Wednesday 7th October 2020 has been re-scheduled for the end of March 2021 - further details to follow.

EUROPE REGION

University of the West of England online Masters courses

The following information on face to face and online Masters courses at the University of the West of England (UWE) has been received from Dr Jim Mason LLB, PGDip, FHEA, Associate Head of Built Environment Programmes, Department of Architecture and Built Environment, University of the West of England. UWE Bristol now has three professionally accredited courses which are recruiting for January 2021 and September 2021 starts. They are:

Masters in Real Estate Finance and Investment contact Grazyna.wiejak-roy@uwe.ac.uk for more information <https://courses.uwe.ac.uk/KN2B6/real-estate-finance-and-investment-distance-learning>

Masters in Real Estate Management contact Grazyna.wiejak-roy@uwe.ac.uk for more information <https://courses.uwe.ac.uk/KN4A6/real-estate-management-distance-learning>

Masters in Construction Project Management contact Krzysztof.dziekonski@uwe.ac.uk for more information <https://courses.uwe.ac.uk/K90012/construction-project-management#coursecontent>

CASLE members and associates are invited to apply in order to add tangible evidence of their specialism in the field to their qualifications. The benefits from networking and becoming part of the UWE Community are another reason to give these courses some consideration. Many of the themes highlighted in the CASLE London conference are explored in greater depth in these programmes.

Academic Research Highlights - CASLE

By Abdul-Majeed Mahamadu (CASLE Task Force) **and Dr Jim Mason** (CASLE Europe Vice President)

This article series will outline some of the exciting research projects being undertaken by members of CASLE, as well as partner organisations across the commonwealth. In this edition we focus on some of the research being undertaken in the University of the West of England, Bristol UK.

UWE's Department of Architecture and the Built environment is home to research centres, where several research projects are being delivered in the built environment and surveying field. In this article we focus on the Centre for Architecture and Built Environment Research (CABER), UWE. This research centre seeks to develop innovative approaches, procedures, technologies and techniques that support the design, management, reconfiguration, maintenance and operation of the built environment including associated land and environmental issues. Below are highlights of two research projects in CABER on which CASLE members are involved and leading.

TIES Living Lab Project: The Transport Infrastructure Efficiency Strategy Living Lab Project:

The Living Lab project is a transformative collaboration of 25 partners together with UK Government (Department for Transport) to use data, technology and modern methods of Construction as well as research within live transport infrastructure projects to deliver significant value-adding benefits across the transport infrastructure sector. The project has been established, bringing together key UK Transport Client groups, Suppliers and academic experts to build capability within delivery, innovation and managing construction risk. UWE is part of the 25-partner consortium and has been commissioned to explore the use of Artificial Intelligence and Machine learning to improve infrastructure project cost estimation as well as benchmarking. UWE's research team includes Dr Abdul-Majeed Mahamadu (CASLE Task Force), Prof Lamine Mahdjoubi and Prof Bill Gething. Furthermore, this project will explore the adoption of the new International Construction Measurements Standard (ICMS) in the UK transport sector. The Royal Institution of Chartered Surveyors (RICS) is a partner on this project and the consortium is being led by The National Skills Academy for Rail, UK. More information <https://www.nsar.co.uk/ties-living-lab/>

Chopping shopping Project: The influence of retail structural change in the evolution of sector allocations in commercial real estate investment portfolios.

Much has been written about the current state of bricks and mortar retail, in particular focusing on the health of the high street and shopping centres in light of the impact of e-commerce on consumer purchases of goods and services. However,

there has been less discussion of the influence of omni-channel retailing and the potential consequences this may have on allocations to the retail sector from an investment perspective. The IPF Research Programme (2015 - 2018) commissioned UWE Bristol, led by academics in UWE including Senior Lecturer Grazyna Wiejak-Roy and Dr Jim Mason (CASLE Europe Vice President), to undertake this research. The study investigated the fundamental question of what influences to date the many changes in retailing and the impact this had on allocations to the sector within major, institutional/ non-specialist real estate investment portfolios, and what may replace retail should long-term allocations to this sector decline. The study will in the future extend beyond the UK, to consider the current impact in a number of locations in other parts of the world.

Safecrobot: Virtual reality immersive safety training environment for robotised and automated construction sites
As a result of high adoption of automation in construction, the EU commission of Safety and Health has forecasted that one of the greatest occupational safety risks will emanate from Machine-Human-Interactions (MHI). Academics in UWE have just been selected by EU's UK National Agency (Erasmus+) to research and develop training techniques that will help mitigate these MHI risks on construction sites across Europe. The main aim of the project is the creation of a very innovative immersive and interactive training environment based on Virtual Reality (VR) technology to impart essential skills and education to construction workers on how to interact with advanced machinery on sites. This project is being led by Dr Abdul-Majeed Mahamadu (CASLE Task Force), and also being supported by Dr Patrick Manu (CASLE Task Force and Chairman CASLE Academic Review Panel) and includes partners in Spain, Poland and Germany. Project will start in November 2020 and run for two years. Updates will be provided in future CASLE newsletter.

CASLE members please share your research with other members by sending us a 100-word summary for inclusion in the E-newsletter.

The UWE Department of Architecture and the Built Environment is pleased to offer a suite of postgraduate level modules in Real Estate Management as continuing professional development (CPD), accredited the Royal Institution of Chartered Surveyors. These courses offer practical application alongside theoretical underpinning to help develop and broaden your knowledge in the topic. This suite consists of courses covering the following topics:

- Real Estate Economics and Valuations
- Real Estate Law
- Strategic Estate Management

Please click on the links above for further information, to make an enquiry or to book a place.

Delivered as blended learning over a ten-week period, you will have access to your course materials via our online learning platform to work through in your own time, while live webinar sessions, will provide an opportunity for you to discuss the materials in more depth.

Access to online materials is available from the 28 September with Webinars running from October through to December 2020. The fee for Real Estate Law and Strategic Estate Management is £792 per participant and for Real Estate Economics and Valuation it is £1584.

Professional accreditation

For individuals attending without undertaking the assessment, this course counts as formal CPD required by the Royal Institution of Chartered Surveyors. If you undertake the module accreditation and decide to continue with your studies, these modules can be used towards our following awards:

- • MSc Real Estate Finance and Investment (distance learning programme) is accredited by the Royal Institution of Chartered Surveyors and the Investment Property Forum.
- • MSc Real Estate Management (distance learning programme) is accredited by the Royal Institution of Chartered Surveyors.
- • PgCert/PgDip Real Estate Finance and Investment (distance learning programme)
- • PgCert/PgDip Real Estate Management (distance learning programme)
- • MSc/PgCert/PgDip Professional Development

If you have any questions, please contact:

UWE's The Professional Development Team - E: professional.fet@uwe.ac.uk

Office Hours: 08:30 – 16:30, Monday to Friday

T: (+44) 0117 32 81043 (option 1, then option 2) - Find a Professional Development Course for You



We would be very pleased to receive information on post graduate activities and courses from other educational establishments. If you wish these to be publicized in a CASLE E-newsletter we would be pleased to discuss terms with you.

The following event is scheduled to go ahead at present but may be subject to postponement or transferred online due to the Pandemic:-



**2ND INTERNATIONAL CONFERENCE
WATER, MEGACITIES
AND GLOBAL CHANGE**

UNESCO HQ, PARIS
1 - 4 DECEMBER 2020

CALL FOR PAPERS

CHALLENGES

- Disaster Risk Reduction
- Service Continuity
- Technical and social conditions
- Land issues and challenges
- Ethics towards nature
- Governance
- Holistic water management
- Sustainable Development Goals

SOLUTIONS

- Planning tools
- Innovative initiatives
- Technical and technological solutions
- New Water Culture
- Sustainable solidarity

Information and submission of articles : <https://en.unesco.org/events/eaumeqa2020>

PACIFIC REGION

Sarawak

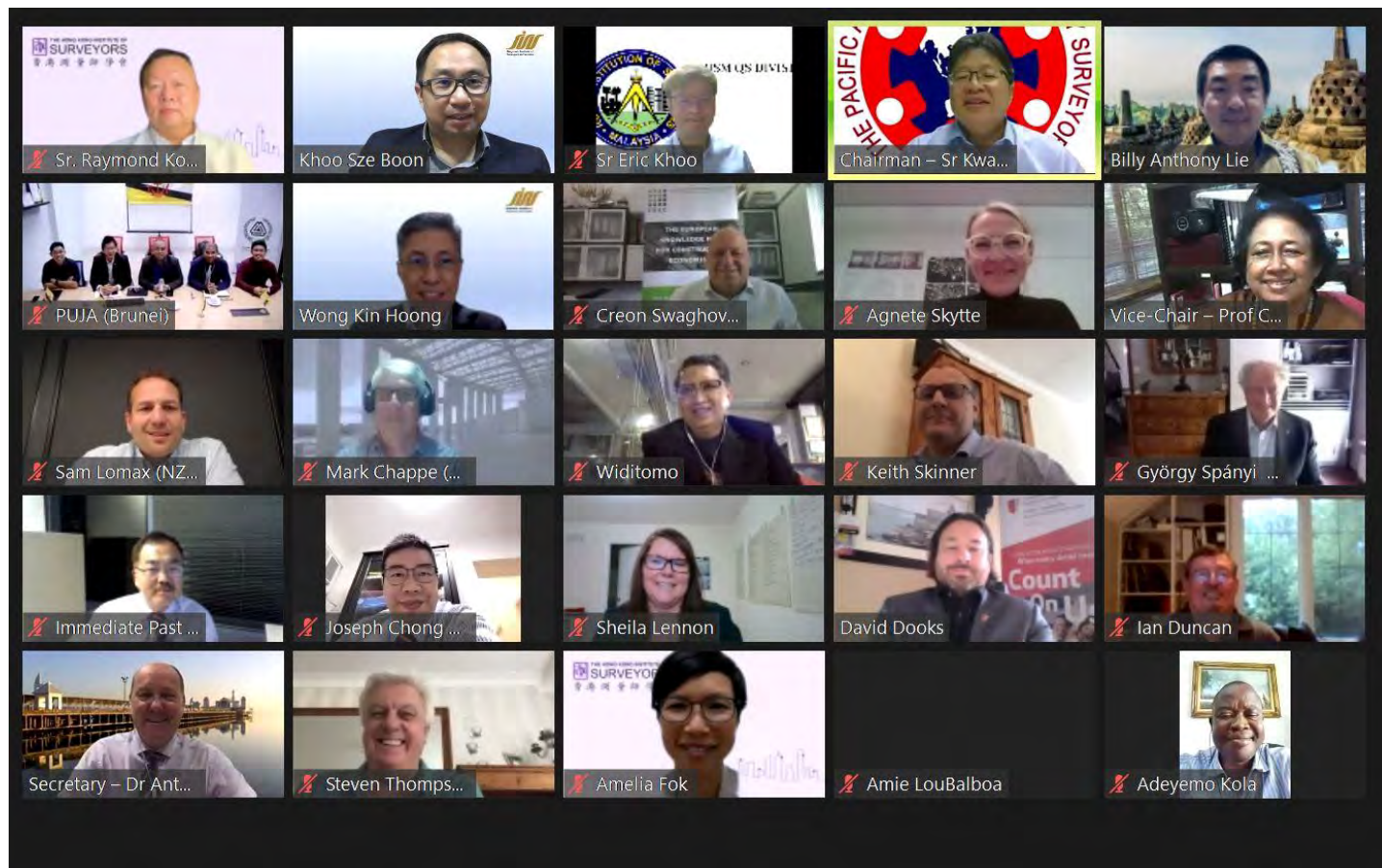


the University College of Technology, Sarawak, in Sib

The above photograph was supplied by Tony Westcott from his visit in 2019 to Sarawak, where he spent a month as their first visiting academic, giving guest lectures, advising on course development in Quantity Surveying to postgraduate level and RICS accreditation.

Pacific Association of Quantity Surveyors (PAQS)

Professor Mrs Chitra Weddikkara, CASLE Past President reported that the PAQS board meeting was held on 7th September on zoom involving 14 countries. Including Board members and observers there were approximately 65 people connected to the meeting. The following pictures include CASLE with all the other major institutions. Professor Mrs Chitra Weddikkara, Past President of CASLE and Vice President for Asia Region is at the end of the second row.



Subscriptions

We sent out invoices in respect of the CASLE Annual Subscription renewal notices in May & June 2020 and we are most grateful to all Member Associations, Individual & Group Associate members who have already paid their subscription. We acknowledge the difficulty for many people during the lockdown, but it would be greatly appreciated if outstanding subscriptions could be paid as soon as possible.

Forthcoming events

The 26th Commonwealth Heads of Government Meeting (CHOGM) scheduled to take place in Kigali, Rwanda from 22nd to 27th June 2020 was postponed until 2021 – date to be announced.

CASLE Fifteenth General Assembly – 2021

Date and Venue to be confirmed

We are requesting nominations from CASLE member associations and Individual and Group Associate members for Regional Presidents and Vice Presidents for Africa, Asia, Atlantic, Europe and Pacific Regions in respect of the CASLE Management Board at the next General Assembly. Please send your nominations to: Mrs Susan Spedding, Secretary General, CASLE – susan.spedding@uwe.ac.uk

Secretary General's Task Force – current members



Mr Max Crofts



Mr Tony Westcott



Mr Brian Waldy



Prof Dr Alan Spedding



Dr Patrick Manu



Mrs Susan Spedding



Dr Jim Mason



Dr Abdul-Majeed Mahamadu

Mr Max Crofts - Past President RICS, International Liaison, Chairman of the Standard Setting Committee of the International Property Measurement Standards Coalition (IPMS), Adviser on Valuation and Property.

Mr Tony Westcott - Honorary Treasurer, Webmaster, Education Adviser - Construction Economics/BIM.

Mr Brian Waldy - Commonwealth Liaison, CASLE Europe President, CASLE representative on BEPIC (Built Environment Professions in the Commonwealth), Commonwealth Secretariat, Commonwealth Foundation & Habitat Professionals Forum .

Dr Jim Mason - CASLE Europe Vice President, Associate Head of Department, Built Environment Programme, U.W.E.

Professor Dr Alan Spedding - CASLE Past President, Education Adviser (Construction Economics), Adviser to the S.G.

Dr Patrick Manu - Academic Conference Organiser, Chairman CASLE Academic Review Panel.

Dr Abdul-Majeed Mahamadu – Senior Lecturer, UWE/CASLE Research Liaison

Mrs Susan Spedding - Secretary General, Administrative Secretary to Survey Review Ltd & Administrative Secretary to CASLE.

Website: www.casle.org, Email: – susan.spedding@uwe.ac.uk Tel: +44 (0) 117 328 3036

SEPTEMBER 2020